



ENJOY THE VIEW

Transform your home with Alpine Aluminium's contemporary windows and doors

Alpine Aluminium has forged a great reputation for manufacturing and installing stunning, high-quality aluminium doors, windows and roof systems. Able to serve the whole of the UK from its Leeds-based showroom, the company has a specialist manufacturing facility and many of its products can be produced in as little as five days.

An unrivalled choice

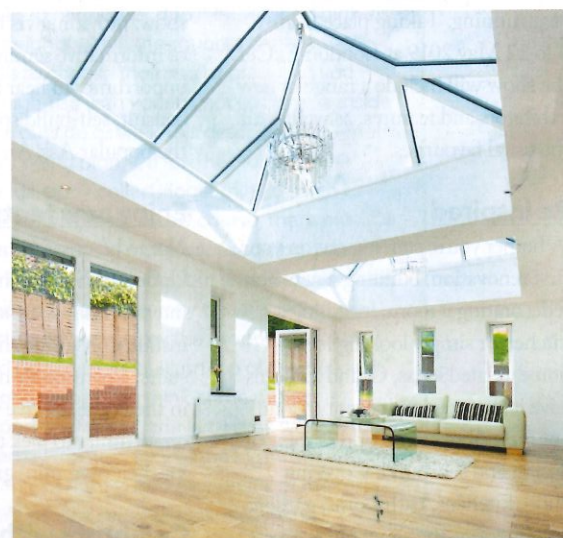
Customers can choose from standard Anthracite Grey doors and windows or if a more bespoke product is required, there is a vast range of colour options available at no extra cost. Products can also be provided on a supply-only basis or be fully fitted by the company's expert installers.

New heights

With a passion for innovation, Alpine Aluminium manufactures some of the most architecturally inspiring doors available on the market. Its latest offering is the AP Infinium, an aluminium sliding door with a profile width of just 2.1 centimetres, making it the slimmest available in the UK. The system can support expansive panels up to three metres in width and 3.5 metres high – available as either a double or triple track. And if energy efficiency is a priority, a triple-glazed option can provide an impressively low U-value of less than 1.0, satisfying the most stringent Passivhaus requirements in thermal efficiency.

The complete package

A comprehensive full-service package is available for all products, from survey and manufacture, through to installation. And every order comes with the peace of mind of a lengthy guarantee.



TOP Alpine Aluminium's AP Infinium Ultra Slimline sliding door has a profile of 2.1 centimetres, making it the slimmest system currently available

ABOVE Bring maximum light into your space with an aluminium roof lantern, an eye-catching option for a roof replacement or extension

● For more information, visit ALPINEALUMINIUM.CO.UK or call 0113 350 4708 to receive a free quote



20 most memorable TV houses

Inspiring projects that highlight the willingness of Grand Designers to push the boundaries of construction and design to the limit

WORDS KAREN STYLIANIDES

Superlatives abound when it comes to describing each and every one of the 100-plus projects that have appeared on our screens over the past two decades. They are all examples of homebuilding obstacles faced and solutions found, of ingenuity, grit and determination, of homemaking dreams realised – sometimes against seemingly insurmountable odds. This selection of some of the most ambitious buildings demonstrates what can happen when there's a passion to create something exceptional.



1 COST-EFFECTIVE CONSTRUCTION

With a limited budget, architect Patrick Bradley (028 7940 1814; pb-architects.com) used shipping containers to create the frame of his three-bedroom house in County Derry, Northern Ireland. 'I always design and build with a quantity surveyor so I know the cost down to the last screw but when we priced up the plans, I couldn't afford to progress with a conventional build method,' he explained. The containers were stacked in a cruciform arrangement, which required a steel skeleton to support the weakest point. Sunk behind a small mound of earth, the majority of the 115-square-metre property, which cost £130,000 to build, is invisible from the front. Metal cladding defines its two levels, with Corten steel for the ground-floor bedrooms and bathrooms and grey metal mesh for the first-floor living space. **First aired September 2014** >>

10 TAMING THE TERRAIN

The grassy hillside in rural Derbyshire on which ecologist Fred Baker and his wife Saffron built their home was so steep that it was unsuitable for cows to graze on. 'Constructing an eco-friendly house on a 45° angle slope presented a unique challenge to balance function, performance and aesthetic,' said the project's architect Matthew Lewis of Arkhi (01260 540 170; arkhi.co.uk). Local farmers quarried out tonnes of limestone to create a level base for a three-bedroom earth shelter house. 'Solar energy is soaked up by the thermal mass of the building, which retains warmth throughout the year,' said Fred. Made of concrete, clad in larch boards and local stone, the property now looks rooted in the landscape. **First aired October 2017**



11 NO-FRILLS TRANSFORMATION

Both the exterior and the interior of this three-bedroom home in Essex defy the conventions of a barn conversion. Inside, there's no plasterboard, paint or wallpaper to hide the structure – just raw architecture. On the exterior, having visible roof lights were ruled out under planning restrictions, so a metal mesh covers the roof, which conceals the roof lights, yet still lets light in. Ben Coode-Adams and Freddie Robins, who is an artist and textiles teacher at London's Royal College of Art, wanted to leave the barn's structure exposed, along with every surface and pipe. Timber-frame expert Nick Spall (07845 921 343; nsrestorations.co.uk) helped Ben manage the project. 'I love that it doesn't have the trappings of a normal home. I love the extremity of it,' said Freddie. **First aired October 2011**



12 REMOTE LIVING

Building a home on the Isle of Skye comes with distinct challenges. This was certainly the case for Rebecca and Indi Waterstone, who bought a half acre of land on the island's northern tip and endured regular gale-force winds during the construction of their two-bedroom, timber-frame house and separate artist's studio. The house is topped by a wind-resistant sloping roof and tapers to the front and back. 'It's designed as a streamlined shelter, burrowed into the hill,' said the project's architect Alan Dickson of Rural Design (01478 613 379; ruraldesign.co.uk). The building is reinforced with two steel posts rooted to the concrete base – vital to guard against the weather. 'We built something special in a place we love, and proved it can work,' said Rebecca. **First aired October 2012** >>

