



AJ SPECIFICATION

FLOORS STAIRS & LIFTS

Eva Jiricna Architects
Hudson Architects
John Smart Architects

GUNTONS BUILDING, NORWICH UNIVERSITY OF THE ARTS HUDSON ARCHITECTS

Our brief was to increase awareness and interaction between departments, students and staff of this five-storey building, which was originally built in 1914.

A central atrium rationalises vertical circulation, opens up the studios and brings natural light deep into the building's core. A rich palette of robust materials reflects the building's semi-industrial character. Dark self-coloured steel cladding to the staircase exterior contrasts with bright galvanised steel on the treads and interior cladding, while its tough character is tempered by concealed lighting positioned beneath the handrail. Polished screed and steel plate floors enhance the industrial aesthetic, while crisp white painted plaster reflects natural light and enhances the sense of space. Intermediate landings are concealed to simplify their form. Full-height glazed partitions bring natural light into the studios, and the new glazed main entrance and foyer is more welcoming and lifts the building's street presence. *Matt Griggs, project architect, Hudson Architects*

Right The steel staircases enhance the industrial feel of the building

Photography by
Joakim Boren

Project data

Start on site 8 July 2013

Completion 18 March 2014

Gross internal floor area 455m²

Form of contract or procurement route

JCT Intermediate Building Contract with contractor's design 2011

Total cost £800,090 (approx)

Cost per m² £1,758

Client Norwich University of the Arts

Main contractor John Youngs Ltd

Structural engineer Rossi Long Consulting

M&E consultant Mott MacDonald

Quantity surveyor Aecom

Acoustics Adrian James Acoustics

CDM co-ordinator Purslows Building Surveyors

Approved building inspector

CNC Building Control

CAD software used Vectorworks

Specified products

Illuminated handrails to stairs

DW Windsor

Garda LED handrail

www.dwwindsor.com

Cladding to stairs and walkways

Advanced Metalcraft

Bespoke unfinished mild steel plate

www.advancedmetalcraft.co.uk

Cladding, treads and risers to stairs

Advanced Metalcraft

Bespoke galvanised steel plate

www.advancedmetalcraft.co.uk

Large-format floor tiles

Grestec Tiles

Shutterstone Collection, 1200 x 1200mm

www.grestec.co.uk

Glass screen and entrance doors

Glass Products Ltd

Internal glass partitions

Komfort Partitions

Komfire 75

www.komfort.com



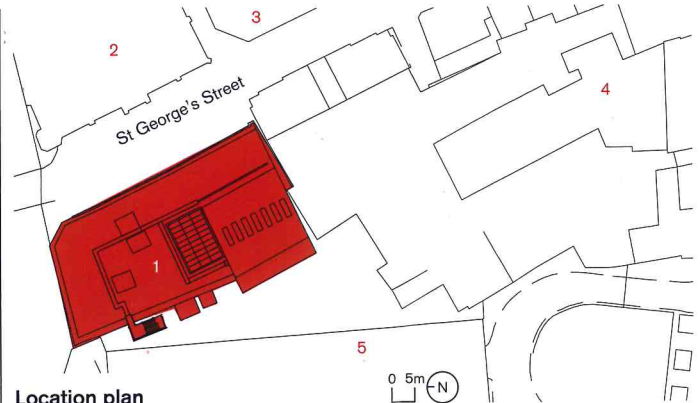
GUNTONS BUILDING, NORWICH UNIVERSITY OF THE ARTS

HUDSON ARCHITECTS

1. Guntons Building
2. St Georges Building
3. St Andrews Hall
4. St Andrews Plain
5. St Andrews multi-storey car park
6. Main entrance
7. Service entrance
8. WC
9. Fashion studio
10. Gallery
11. Workshop
12. Electrical substation
13. Atrium
14. Kitchenette
15. Lobby
16. Store
17. Gallery reception
18. Platform lift lobby

19. Staircase and stairwell
20. Office
21. Studio
22. Classroom
23. Teaching space
24. Bridge

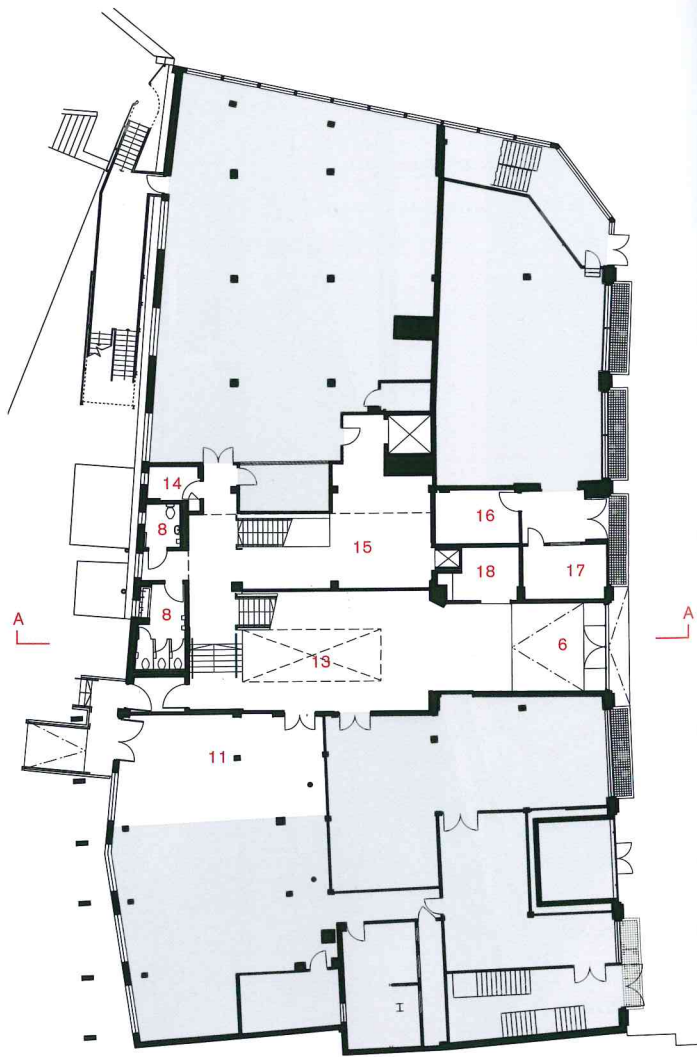
Opposite White painted plaster and brick gives a feeling of increased space



Location plan

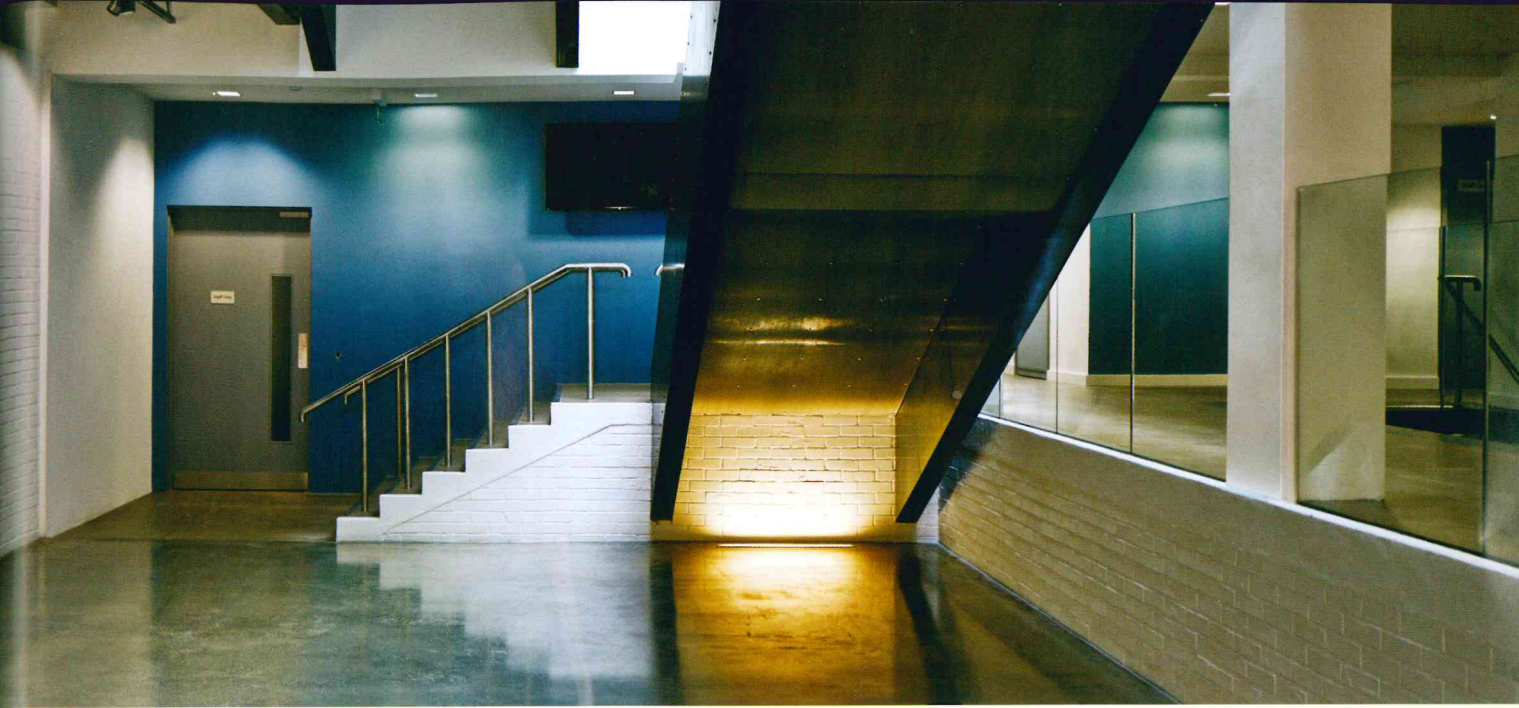


Existing ground floor plan

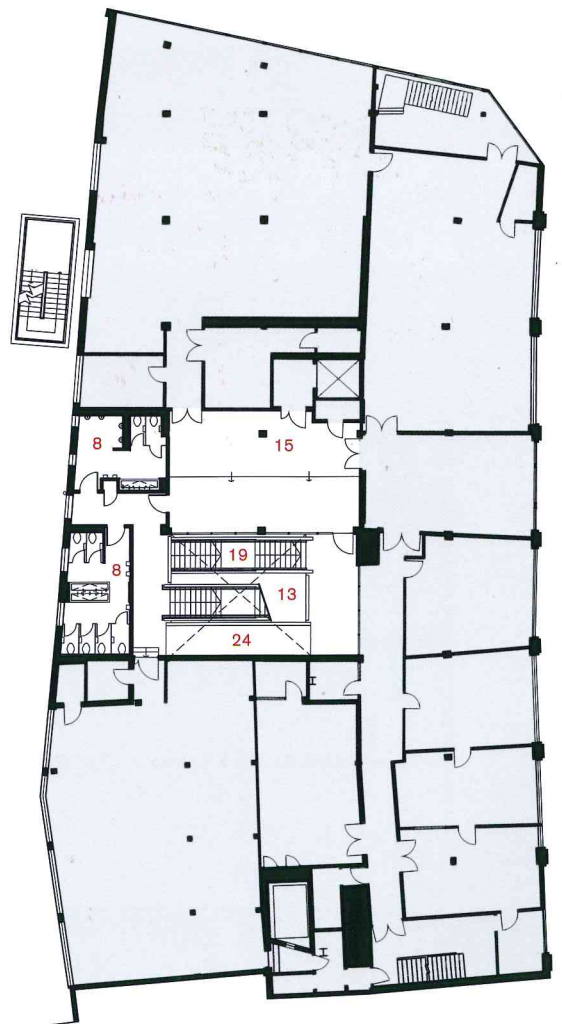


Proposed ground floor plan



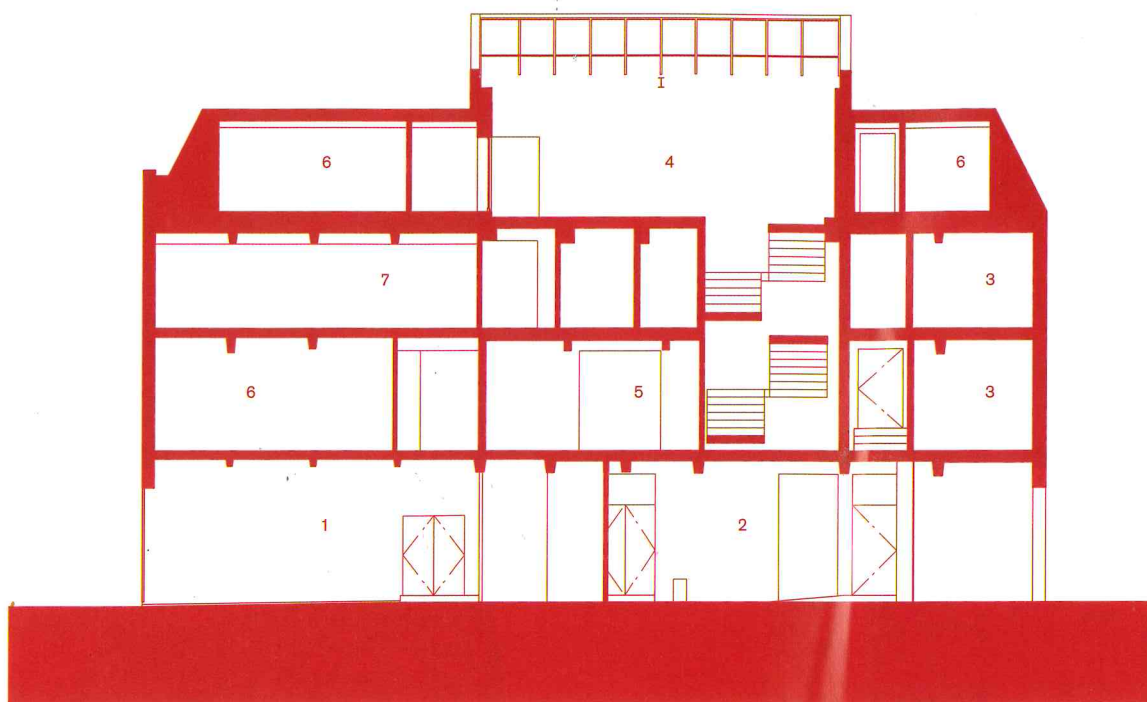


Existing first floor plan



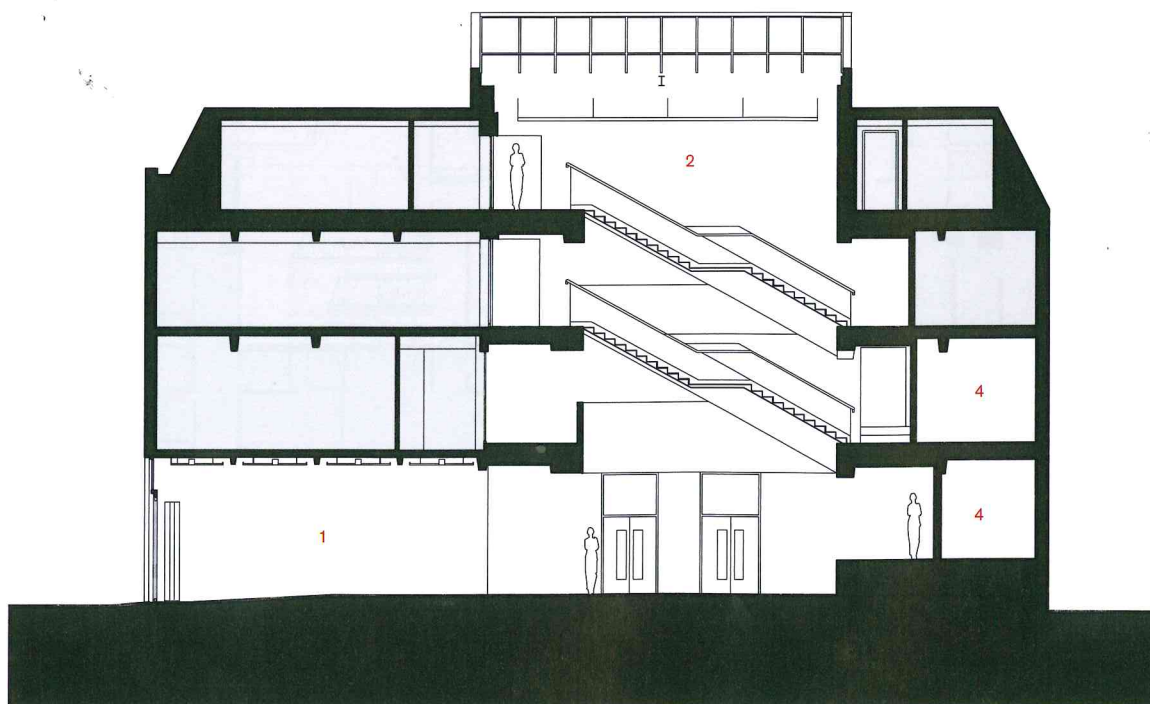
Proposed first floor plan





- 1. Main entrance
- 2. Service entrance
- 3. WC
- 4. Stairwell
- 5. Classroom
- 6. Office
- 7. Studio

Section A-A: existing



Section A-A: proposed

Next page Lighting concealed in the underside of the handrails softens the industrial look

Dark steel cladding to the
staircase exterior contrasts
with galvanised steel on
the treads and interior

