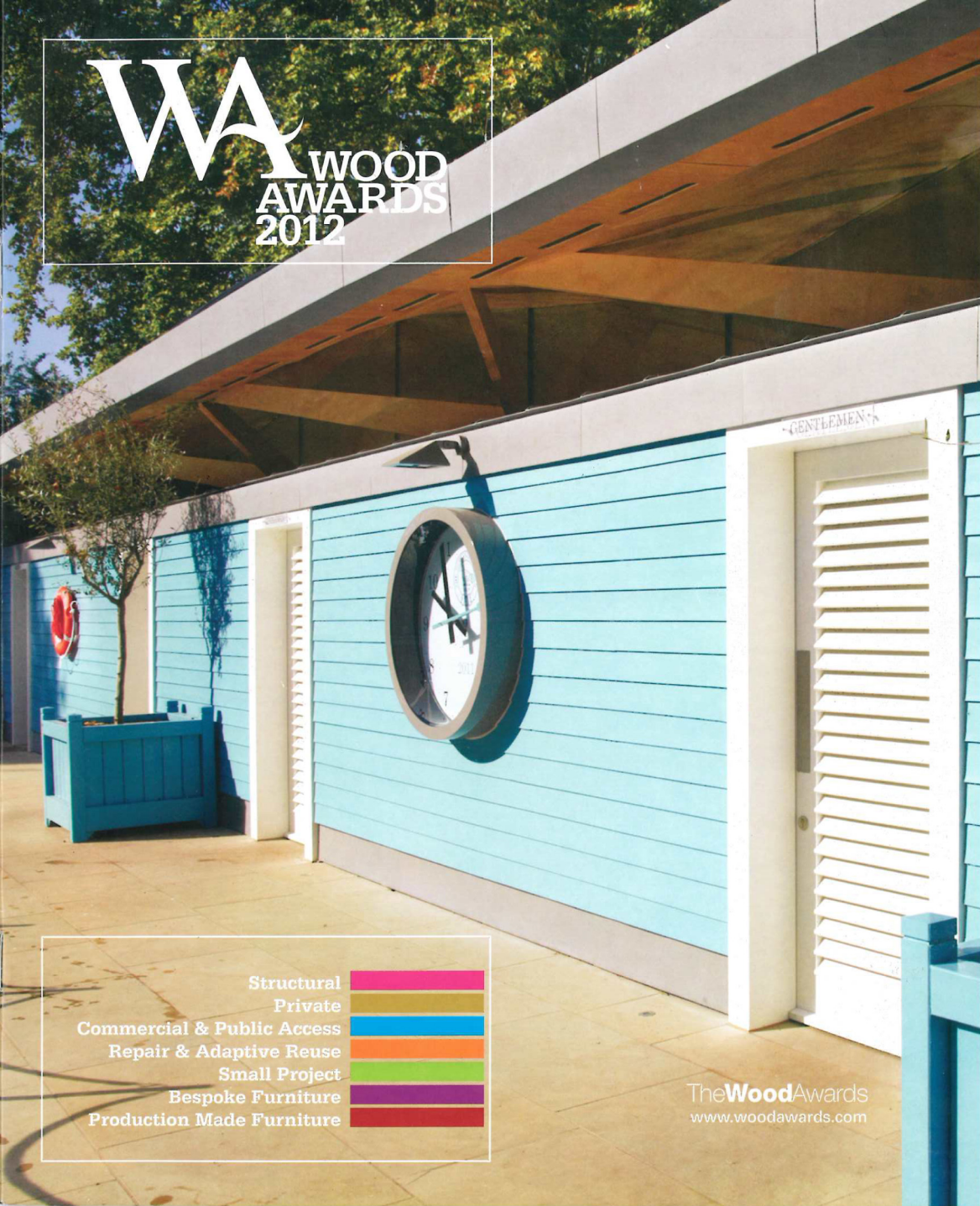


WA WOOD AWARDS 2012



GENTLEMEN

Structural	
Private	
Commercial & Public Access	
Repair & Adaptive Reuse	
Small Project	
Bespoke Furniture	
Production Made Furniture	

TheWoodAwards
www.woodawards.com

WINNER

Repair & Adaptive Reuse Feeringbury Farm Barn

Location:
Essex
Architect:
Hudson Architects
Structural Engineer:
The Morton Partnership
Main Contractor:
NS Restorations
Wood species used:
English oak

The judges felt that this conversion of a large oak-framed barn in Essex into a family home and artists' studios could not have fulfilled the judging criteria more fully. The philosophy behind the repair and conservation of the Grade II listed barn was to retain as much of the original fabric as possible, and local authority conservation officers were keen to retain the semi-industrial appearance of the barn. This had proved problematic for previous designers who had been unable to overcome officers' particular insistence that the roof should contain no visible rooflights.

Hudson Architects' solution was to conceal polycarbonate rooflights beneath an expanded steel mesh. Beneath the roof, large sheets of plywood provide a raw finish that corresponds with the barn's semi-industrial character, while offering a powerful contrast between modern materials and the ancient timbers of the barn's oak frame.

Inside, almost all the original oak-framed structure has been retained, with new timber used sparingly to replace timbers that were no longer usable. The oak structure was carefully repaired in discussion with a conservation structural engineer, keeping modern interventions to a minimum.

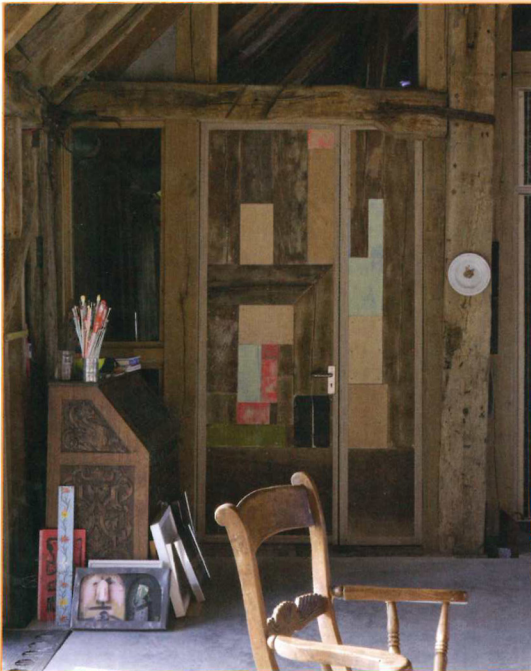
To create private spaces such as bedrooms and bathrooms, two large 20th century internal concrete silos were brought into re-use. One houses bathrooms serving the bedrooms, the other an oak spiral staircase designed and built by Ben Coode-Adams that leads to the master bedroom suite on a mezzanine floor.

The judges praised the application of reused timber throughout the interior, from tea crates to old cladding, 'all done with love and attention,' they said.

Modern interventions to the structure have been kept to a minimum

The owners collaged together reclaimed material in a carefully considered manner

Photos: © James Brittain



"This could not have fulfilled the judging criteria more fully"



From the outside the barn retains its industrial appearance, with only the entrance doors hinting at change