

inhabit

architecture today

New houses: Loyn & Co Architects | Millar & Howard Workshop
Alma-nac | 31/44 Architects | BBM Sustainable Design | Studio 304
James Gorst Architects | Rural Design | McGarry-Moon Architects

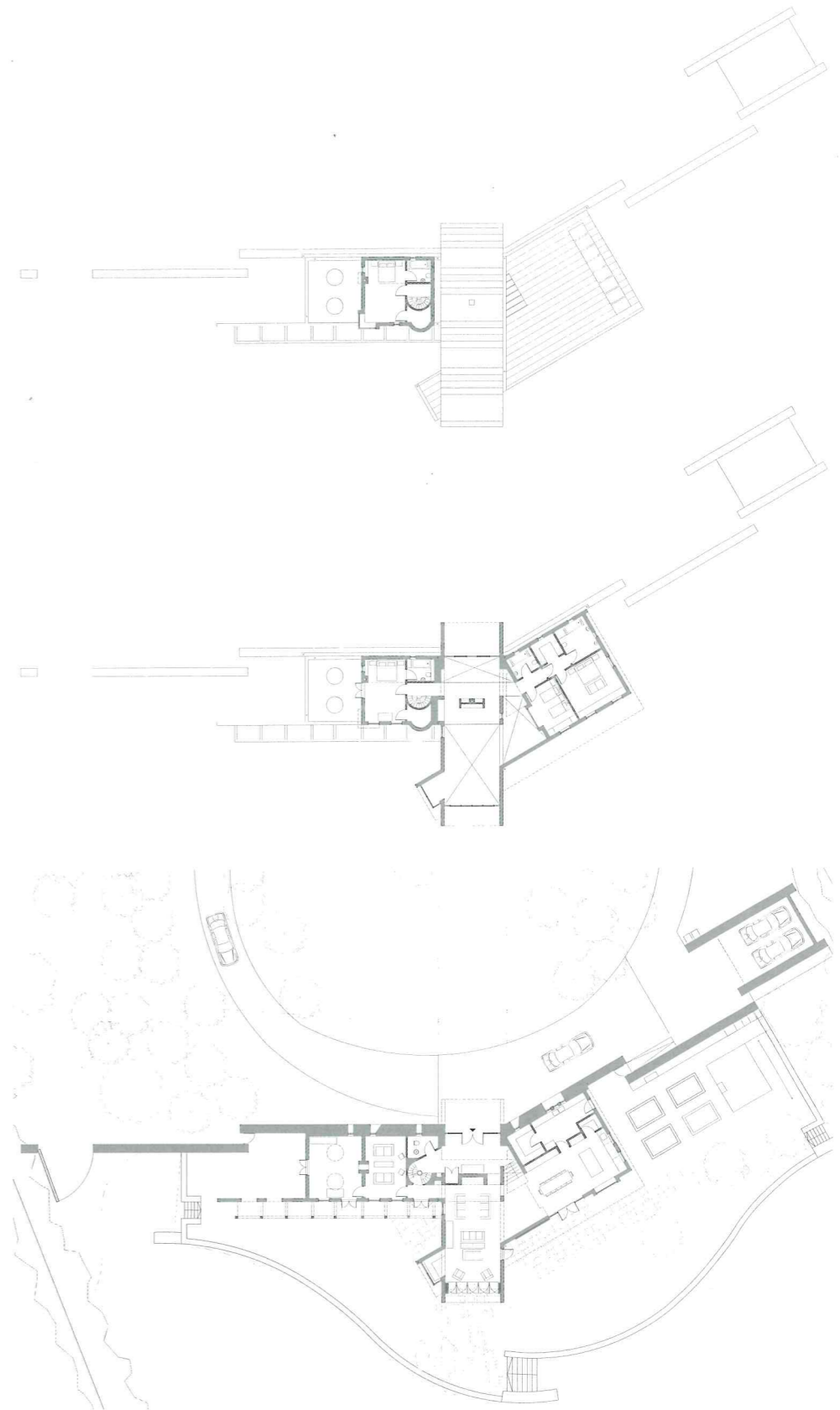
Autumn 2016
ISSN 2052-6105



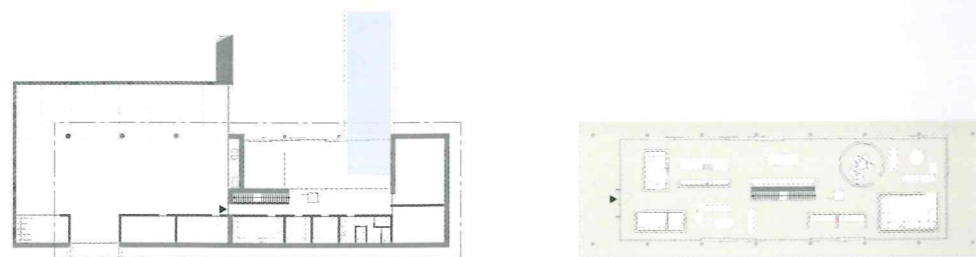


HUDSON ARCHITECTS BURCOTT MINOR

Currently at tender stage, Burcott Minor is a new NPPF 55 Passivhaus dwelling in Somerset by Hudson Architects. Set high in the Mendip Hills, the house is informed by vernacular architecture, with an arrangement that suggests an accretion of different volumes over time. A barrel-roofed 'basilica' references nearby Dutch barns, and acts as a pivot from which two wings radiate – one containing family living spaces and the other enclosing more private spaces, including guest rooms and an artist's studio. Stone, render, timber and metal are used to further distinguish the individual forms. The architect has worked with the University of Bath to develop sustainable construction techniques for the project, providing an on-going educational resource and a focus for research into low-carbon construction.



JOHN PARDEY ARCHITECTS THE AVIARY



John Pardey Architects has obtained planning consent for a NPPF 55 house located on a wooded site in Munstead near Godalming, Surrey. Designed in collaboration with landscape architect Todd Longstaffe-Gowan, the Aviary is conceived as an object-like pavilion floating in its sylvan site. A series of 'boxes' containing the cloakroom, television room, cinema, and pantry subdivide the ground floor and are likened to giant pieces of furniture. Clad in coloured polished plaster and timber, the enclosures sit below the ceiling soffit, reinforcing their object-like quality. The living spaces occupy the areas between the boxes, while the glass envelope is intended to blur the distinction between inside and out. Upstairs, set behind a veil of off-white fibre reinforced concrete fins, lies a battery of bedrooms. These are planned around a roof garden, that is also designed to bring the house's inhabitants and nature together.

