

# inhabit

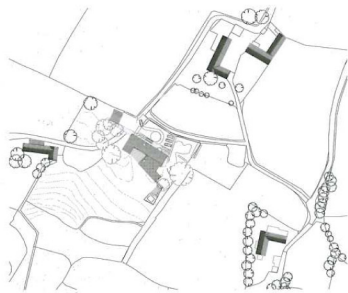
architecture today

Rural houses: John Pardey | Hall McKnight | Invisible Studio  
Birds Portsmouth Russum | Ben Adams | Knox Bhavan  
Charles Barclay | Hudson Architects | ZMMA | Guy Stansfeld

Spring 2013



# HUDSON ARCHITECTS HAMEAU D'ORGE



Hudson Architects has replaced a drab house overlooking St Ouen's Bay on Jersey with a five-bedroom family home that tries to do better justice to its scenic setting than its predecessor. The site is within one of Jersey's Green Zones and the St Ouen's Bay Special Area, where there are strong presumptions against development. Nevertheless, planners accepted the principle of replacing the existing dwelling with a house of superior quality.

Although the house sits on a plateau with extensive sea views, it does not attempt to dominate its surroundings. A lower-ground level was excavated from the site, allowing the house to remain relatively discreet, and present a modest aspect for visitors arriving at the

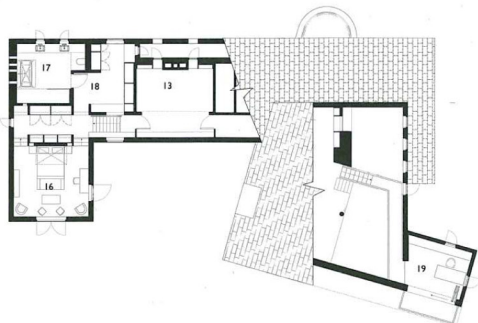
end of its traditional Jersey lane. Low-pitch roofs form a gentle yet contemporary profile against the horizon, and it is only when one moves around the site that the building's more dramatic qualities are revealed.

The entrance elevation contains a timber colonnade punctuated by a semicircular stone hallway that bulges from the house, referring to the Martello towers found around the Jersey coast. Timber cladding cuts into the white-rendered elevation of the sea-facing garden front, where the main body of the house and a visually lighter 'pavilion' enclosing the main living areas frame a south-facing terrace on the upper-ground floor. Overhead a 'crow's nest' cantilevers outwards, and

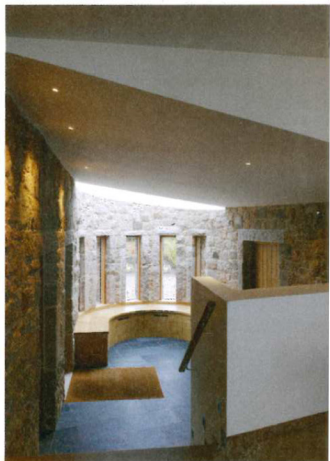
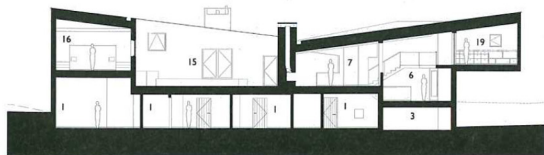
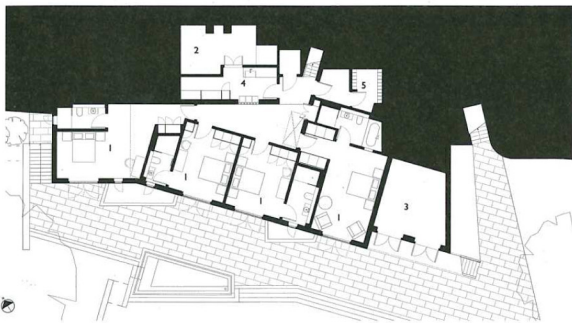
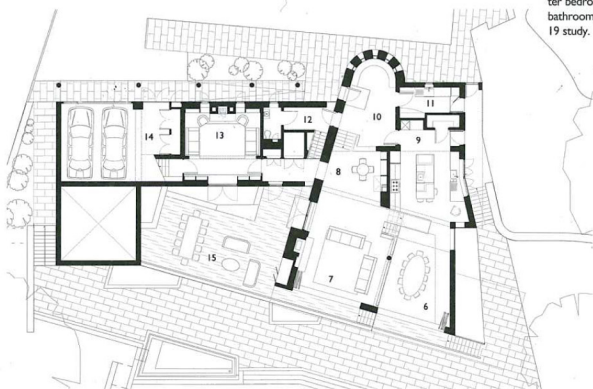








- ▷ The main bathroom has an irregular arrangement of windows below a stepped ceiling and rooflight.
- ▷ Stone-lined entrance hall with slot windows and curved rooflight above.
- ▷ The house presents a discreet profile to visitors arriving along its traditional Jersey lane.
- ◁ Lower ground, ground- and first-floor plans, and NW-SE section: 1 bedroom with en-suite bathroom, 2 plant, 3 store, 4 laundry/utility, 5 wine store, 6 dining, 7 main living, 8 adjacent living, 9 kitchen, 10 hall, 11 utility/ boot room, 12 lobby, 13 snug, 14 garage, 15 terrace, 16 master bedroom, 17 master bathroom, 18 dressing area, 19 study.







together with a series of balconies and terraces, offers great sea views.

Inside, the height and level changes across the building provide for a lively composition of characterful, multiply-interconnecting spaces. The main living area juxtaposes a steel and glass stair with oak beams and columns, and walls of exposed pink Jersey granite that refer to the building's context and to traditional building methods.

External landscaping fixes the house within its setting; riven slate paving matches the stone used to form pathways, patio areas, a hot pond and water seat, and contrasts with the softer curved pink granite walls that form steps, planters, a fire pit and seating. □

Architect: Hudson Architects design team: Anthony Hudson, Janet Ansmore, Matt Griggs client: private main contractor: Camerons structural engineer: Ross-Gower Associates QS: Tillyard m&e consultant: Henderson Green Partnership landscape: Shells Flynn lighting consultant: MacDonald Tait LIGHT fitted furniture: Paul Haslam insulated render: rivenwall roof panels: Kingspan windows: Velfac sliding-folding doors: chueco LED lighting: Architectural Lighting & Controls rooflights: Glazing: Fusion ironmongery: Joseph Giles sanitaryware: Duravit Starch/V&A engineered timber flooring: Tuttoparquet photographs: James Brittain. Contract value: £1.9m floor area: 550 square metres contract JCT Intermediate Building Contract contract duration: 18 months.

