



26.OI.12

Hudson Architects

The AJ and Marley Eternit congratulate you on making the Small Projects shortlist

£4.95 / THE ARCHITECTS' JOURNAL / THEAJ.CO.UK





HUDSON ARCHITECTS

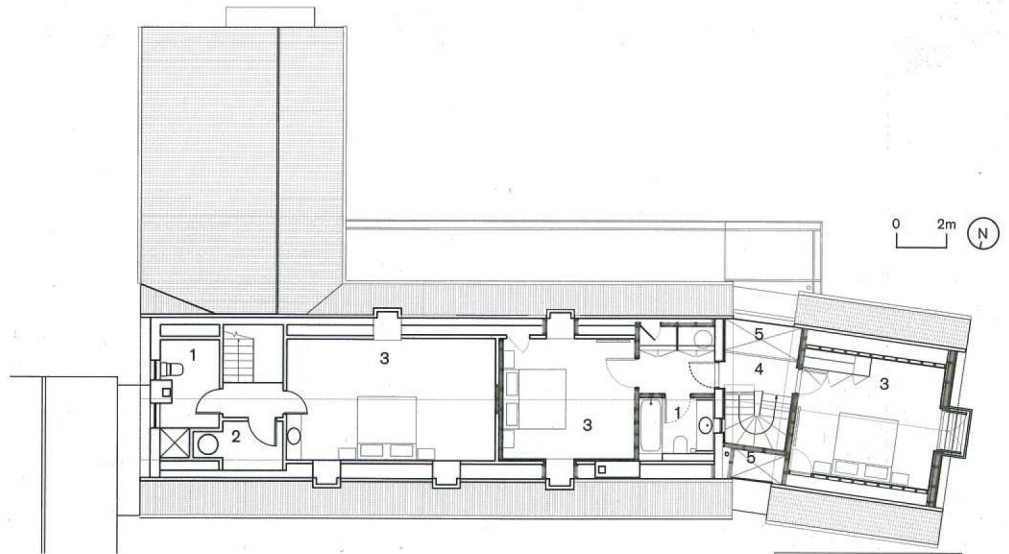
Lammas, Cley-next-the-Sea, Norfolk,
Cost £185,000

This extension to a 1960s two-storey house reads as an extrusion of the original house in terms of form, scale and materiality. The addition is positioned at a slight angle from the original house to establish a distinct identity for the new guest accommodation. A glazed link, which joins the extension to the original house, sits just below the eaves to

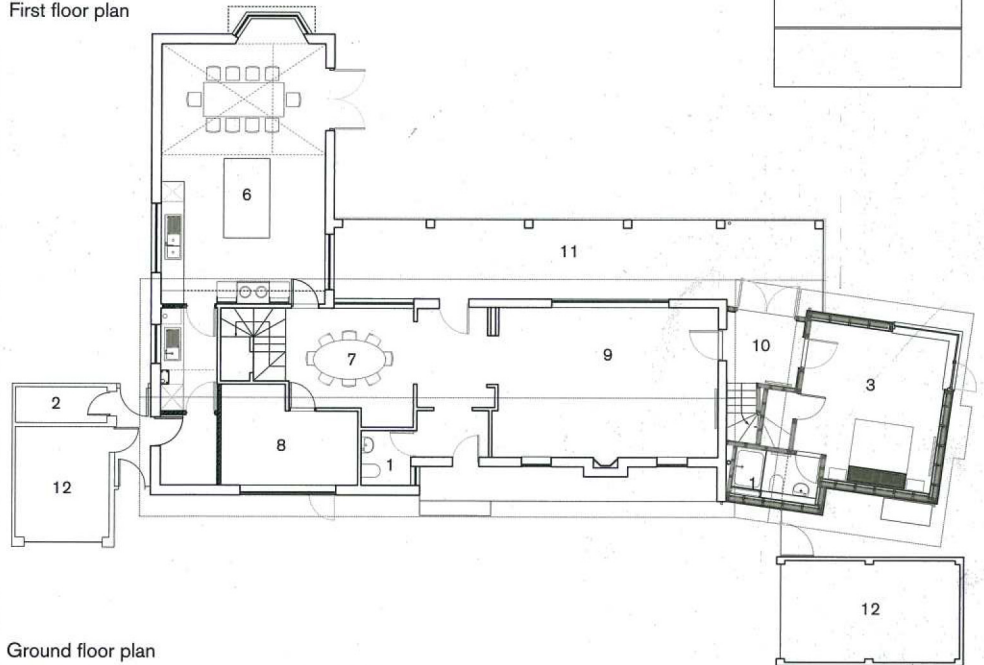
emphasise a break in the roofline that allows the old and new to be read as separate elements. Inside the link, oak stairs lead to guest accommodation via a landing spanning the house and the extension. A large corner window exploits the structural properties of the timber frame. External materials are used inside the link, providing a sense of going from inside to out.



MATT GRIGGS



First floor plan



Ground floor plan

CREDITS

CLIENT
Private
STRUCTURAL ENGINEER
Alcock Lees
Partnership
CONTRACTOR
RJ Bacon Builders
FLOOR AREA
50m²

LEGEND

- 1. Bathroom
- 2. Store
- 3. Bedroom
- 4. Walkway
- 5. Void
- 6. Kitchen
- 7. Dining
- 8. Study
- 9. Sitting room
- 10. Glazed lobby
- 11. Pergola
- 12. Garage

