

# HOMES & GARDENS®

## Push boundaries

THE ARCHITECTURAL DETAILS THAT SHAPE A HOME

**DESIGN  
DIRECTIONS**

**YOUR GUIDE TO  
EXTENSIONS**

**AN A-Z OF  
ARCHITECTS**

**CURVES IN THE  
KITCHEN**

ISSUE 295 PRINTED IN THE UK £5.75

FUTURE

9 770018 423344 03 >

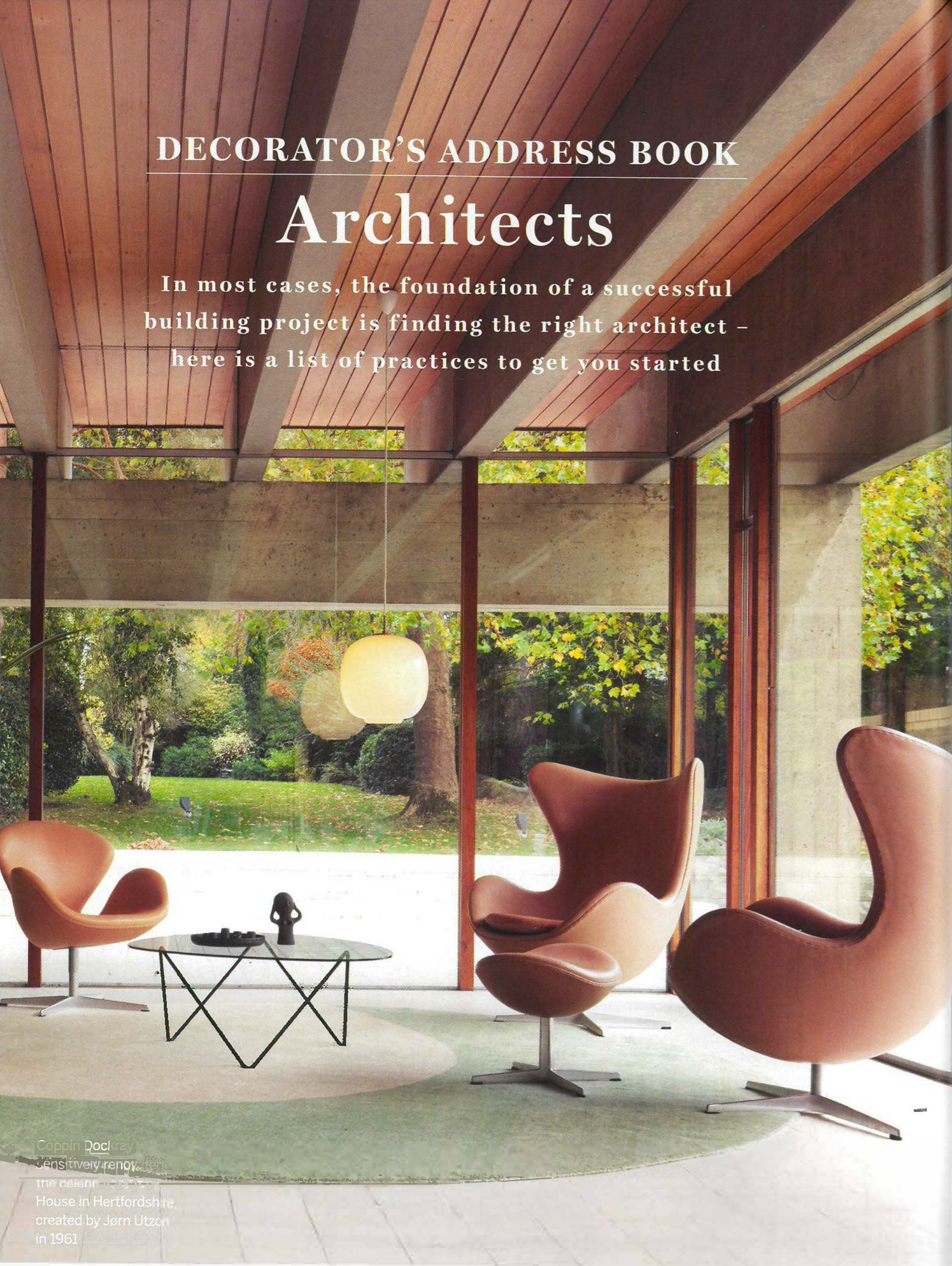


MARCH 2024

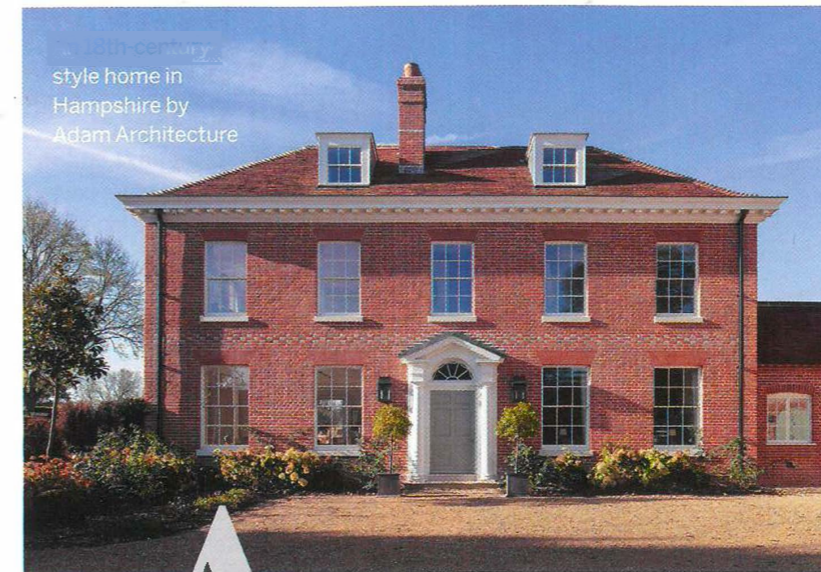
## DECORATOR'S ADDRESS BOOK

## Architects

In most cases, the foundation of a successful building project is finding the right architect – here is a list of practices to get you started



Coppin Dockray sensitively renovates the century-old House in Hertfordshire, created by Jørn Utzon in 1961



## ADAM ARCHITECTURE

## Winchester/London

Founded in 1986, Adam Architecture's mission is to create the listed buildings of the future. Restoring, renovating or extending historic and protected properties, as well as designing new homes for the town and country, the practice combines the latest technology with a classical aesthetic, proving sustainability and the traditional aesthetic can complement each other.

[adamarchitecture.com](http://adamarchitecture.com)

## BEASLEY DICKINSON ARCHITECTS

## London

2014-founded Beasley Dickinson Architects takes a poetic approach to material, tactility, light and space, responding to individual contexts rather than owning a specific aesthetic. From contemporary builds to Grade II-listed updates and seaside holiday homes, each project is long lasting and sustainable.

[beasleydickson.com](http://beasleydickson.com)

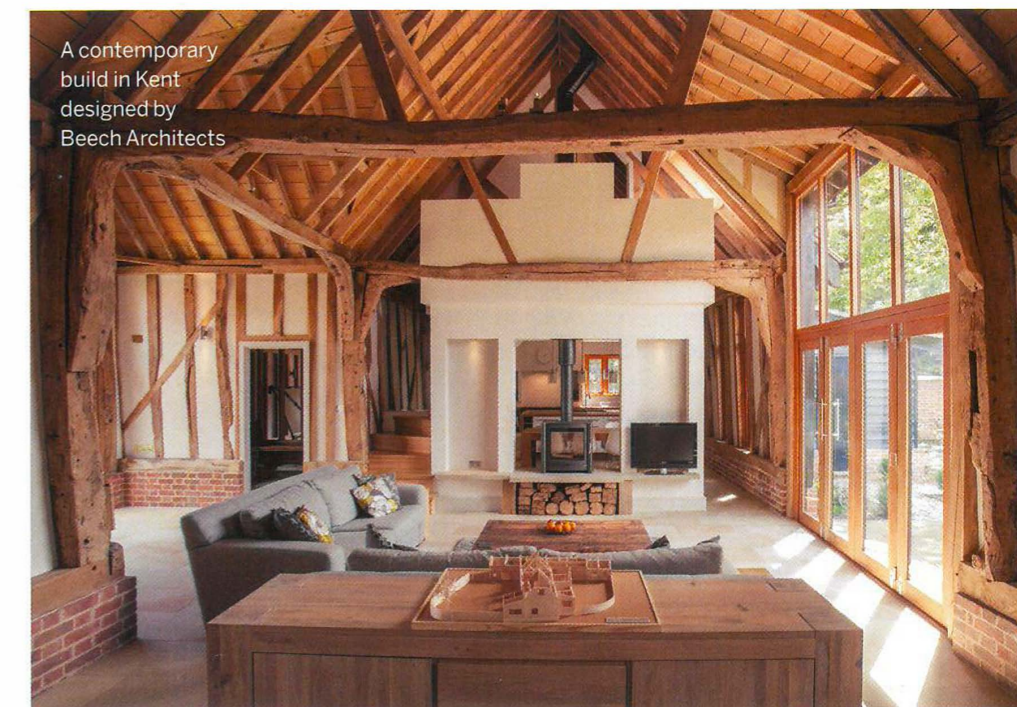
FEATURE AMY MOOREA WONG PHOTOGRAPHS (COPPIN DOCKRAY) JAMES O DAVIES (ADAM ARCHITECTURE) DYLAN THOMAS (BEECH ARCHITECTS) STEVE TAYLOR PHOTOGRAPHY

## BEECH ARCHITECTS

## Suffolk, East Anglia

From sustainable homes to sensitive conversions, extensions to works on heritage buildings, 2008-established Beech Architects works on houses of every kind, focusing on playful, low-energy, contemporary designs that carefully relate to their environments.

[beecharchitects.com](http://beecharchitects.com)



## BRADLEY VAN DER STRAETEN

## London

Known for 'designing the unexpected' since 2010, architecture and interior design studio Bradley Van Der Straeten specialises in homes that are intriguing and colourful. From extensions and historic and listed properties to new builds and interior design upgrades, every project is full of distinct character.

[b-vds.co.uk](http://b-vds.co.uk)

## COPPIN DOCKRAY

## London

Expert at designing new homes on sensitive sites and reimagining significant heritage buildings, 2012-founded Coppin Dockray works on houses created by the 20th century's great architects.

Bringing their pioneering structures back to life, the practice produces homes that are relevant, joyful and protected for the future.

[coppindockray.co.uk](http://coppindockray.co.uk)



Elliott Architects designed this home for a woodland site in Northumberland

## ELLIOTT ARCHITECTS

### Hexham, Northumberland

Working in rural and sensitive contexts including national parks, areas of outstanding natural beauty, the greenbelt, the open countryside and conservation areas, 2014-founded Elliott Architects is adept at creating meaningful designs that honour their bucolic backdrops, introducing a highly contemporary aesthetic to sensitive historic and pastoral settings.

[elliottarchitects.co.uk](http://elliottarchitects.co.uk)

## HILLS & CO

### The lower Wye Valley

Founded in 2015, Hills & Co provides contemporary, thoughtful and sustainable architecture on a range of scales, including low-energy new builds, modern refurbishments, extensions to listed properties and treehouse accommodation. With a holistic 'inside-and-out' design approach, the firm's packages include everything from insulation to paint, with each project reflecting its heritage and environment.

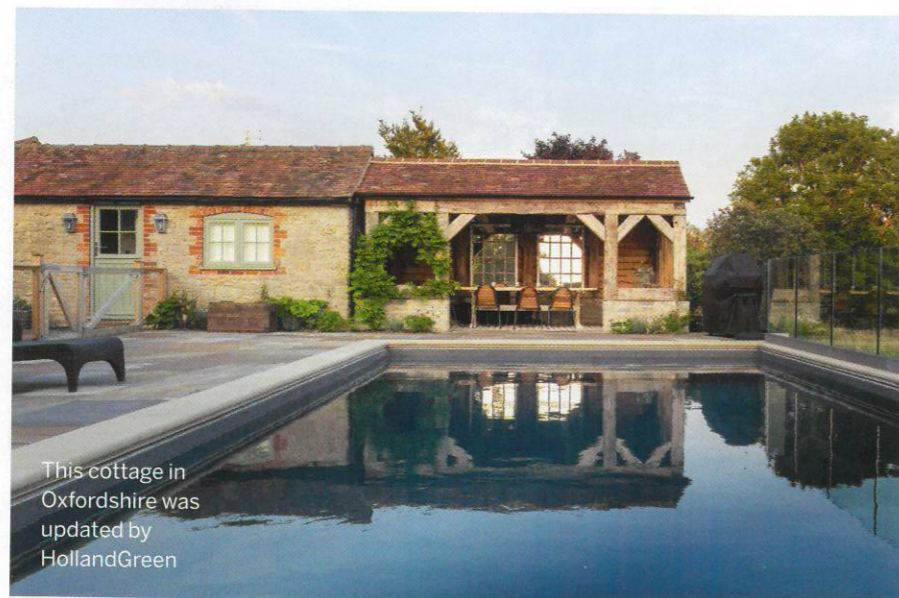
[hillsandcompany.co.uk](http://hillsandcompany.co.uk)

## HOLLANDGREEN ARCHITECTURE, INTERIOR DESIGN & LANDSCAPE DESIGN

### Thame, Oxfordshire/London/Cirencester, Cotswolds

Founded in 2010, HollandGreen combines architecture, interior and landscape design to create buildings that considerably amalgamate indoors and out. The firm is known for sensitively reimagining heritage properties while introducing contemporary and energy-efficient updates.

[hollandgreen.co.uk](http://hollandgreen.co.uk)



This cottage in Oxfordshire was updated by HollandGreen

## HUDSON ARCHITECTS

### Norwich, East Anglia/London

Blending exciting, progressive aesthetics with the local environment and an acute awareness of environmental responsibility, 2002-established design studio Hudson Architects specialises in creating distinctive homes. From converted agricultural buildings to subtle barn conversions, expansive extensions and coastal retreats, each is intricately integrated into its neighbouring landscape.

[hudsonarchitects.co.uk](http://hudsonarchitects.co.uk)

## HYDE + HYDE ARCHITECTS

### Cardiff/Oxford

Launched in 2006, Hyde + Hyde Architects creates rich, tailored designs imbued with personal meaning and poetry. Specialising in exclusive, high-end houses, the brand works on new builds, zero-energy homes and refurbishments, each responding directly to its setting, from the urban to remote coast and conservation areas.

[hydearchitects.com](http://hydearchitects.com)

PHOTOGRAPHS (ELLIOTT ARCHITECTS) JILL TATE; (HOLLANDGREEN) ELLIE WALPOLE

## ICON ARCHITECTS

### London

Creating homes that are elegant, practical and sophisticated, 2004-founded Icon Architects infuses properties with personality. Working predominately to breathe life back into period buildings while adding modern functionality, the firm emphasises maximising space and light to create a feeling of expansive openness.

[icon-architects.com](http://icon-architects.com)

## JAMES ARMITAGE ARCHITECTS

### Bath

Established in 2007, James Armitage Architects' expertise is in designing period houses as well as extensions, conversions and refurbishments, crafting traditional architecture that meets contemporary needs and creating beautiful buildings to be cherished for generations to come.

[jamesarmitage.com](http://jamesarmitage.com)

## KONISHI GAFFNEY ARCHITECTS

### Edinburgh

Building with a Japanese perspective since 2009, Konishi Gaffney Architects' work is beautiful, simple and modest, with a gentle touch that expresses quiet beauty and relaxed restraint. Centred on the emotional impact of materials, light and the connection between inside and out, the practice's portfolio spans garden offices to rural new builds.

[konishigaffney.com](http://konishigaffney.com)

PHOTOGRAPHS (LOYN+CO ARCHITECTS) MEDIA/D; (MARK BOLTON)



A 1900s building in the Wye Valley was converted by Loyn+Co Architects

## LOYN+CO ARCHITECTS

### Penarth, Wales

Aiming to elevate the profile of contemporary architecture in Wales, Loyn+Co Architects was founded in 1992 as a specialist in creating one-off houses that are sustainable and tailored specific to their environments. From new zero-carbon homes in areas of natural beauty to extensions to historic buildings, the firm uses local materials to help buildings blur into the environment.

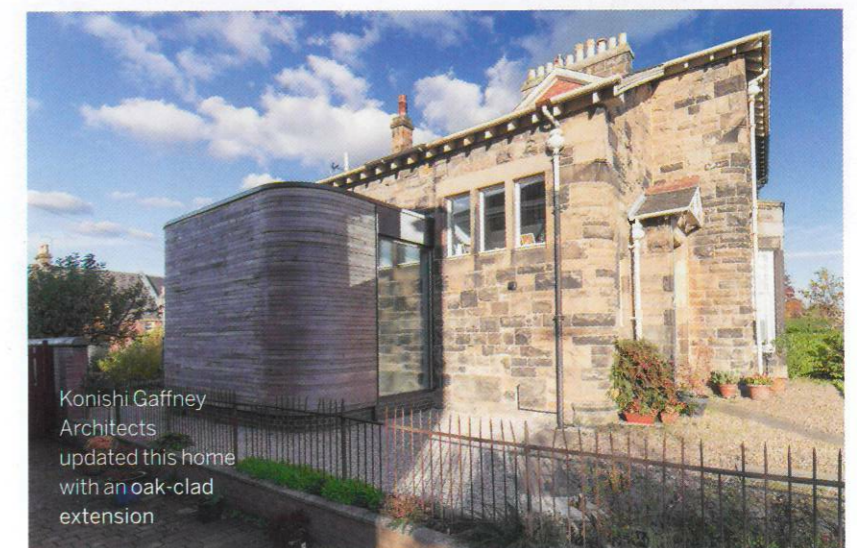
[loyn.co.uk](http://loyn.co.uk)

## MARY ARNOLD-FORSTER ARCHITECTS

### Dunkeld, Perthshire

Introducing quiet, thoughtful architecture to rural Scotland and northern England, 2016-formed Mary Arnold-Forster Architects' projects are based on a rigorous study of their context and site, resulting in restrained and beautifully crafted spaces.

[maryarnold-forster.co.uk](http://maryarnold-forster.co.uk) →



Konishi Gaffney Architects updated this home with an oak-clad extension